

SCOPE 4.1 Whats New?

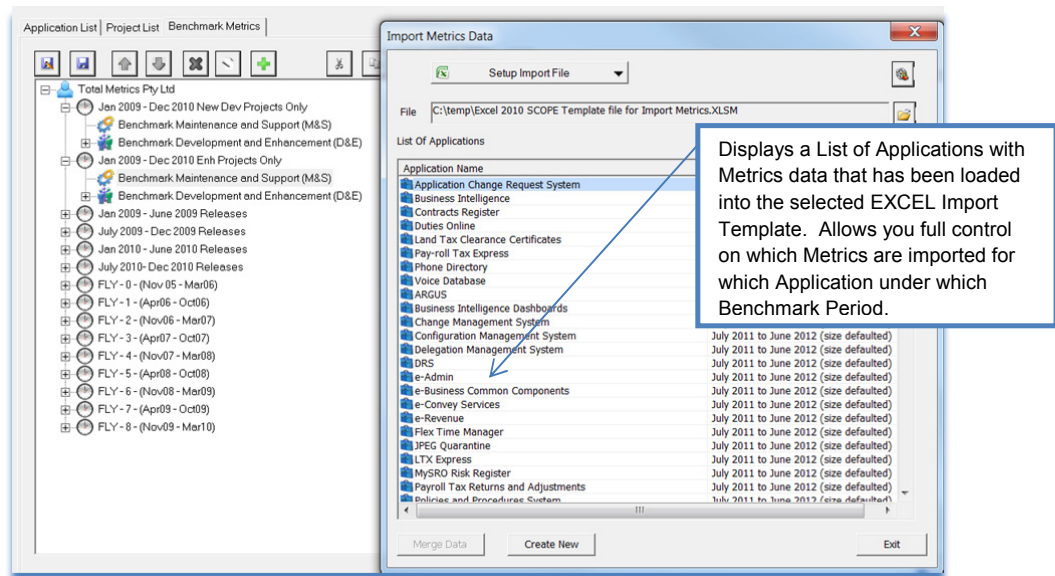
Release Notes 2012

SCOPE 4.1 has focussed on increasing the efficiency and ease of using **SCOPE** to count function points. In addition to speeding up data entry, it includes more informative audit and reporting, with import functions for all your project metrics. The new [SCOPE Lite™](#), [SCOPE Metrics™](#) and [SCOPE Viewer™](#) editions combine together to provide you with an extremely cost-effective FP tool solution, for all your FP Users.

The Key Features delivered by **SCOPE 4.1** include:

1 Automatic Load of Metrics Data from Excel

SCOPE 4.1 has import templates for quick loading of your Metrics data from MS Excel® for all your Applications, Releases, Projects or Change Requests. Your project teams can enter or import their effort and defect and/or environment data for all their projects into the **SCOPE** template ready for a bulk import into **SCOPE**. On import you can select to *[Create New]* Applications/Releases/ Projects or Change Requests if these are not already recorded in **SCOPE** or you can *[Merge]* the imported data with existing **SCOPE** metrics data. If you need to modify the imported data, it is as simple as entering the new data in the Excel template and re-importing or editing it directly in **SCOPE**. Once your effort and defect data is recorded in **SCOPE** you can use its Benchmark reporting capability to create all your Management Benchmark Performance reports.



2 Automatic Audit Feature for Comparing Counts

SCOPE 4.1 has a new 'Compare' option in the Report List Window, so you can run any two SCOPE reports (WORD, EXCEL, RTF or PDF) and automatically compare the differences. The compare mode compares each line of the report and highlights any text that has been changed, added or removed. The SCOPE 4.1 reports which output to EXCEL® have been specifically reformatted to facilitate comparisons and the FP Details reports now include Audit tracking information (when the node was created/modified and by whom).

Z:\Data\AAB\SCOPE\Release 4.1\Reports for Demonstrations\ORIGINAL_CountSession_Detail_Function_FP.xls							Z:\a\AAB\SCOPE\Release 4.1\Reports for Demonstrations\UPDATED COUNT CountSession_Detail_Function_FP.xls						
[#R_005_Table_Detail_Function_FP]							[#R_005_Table_Detail_Function_FP]						
Hierarchy Number	Function Data Name	Function Data Type	Multiplier				Hierarchy Number	Function Data Name	Function Data Type	Multiplier			
[6.1]	Add ASSIGNMENT LOCATION DETAILS	Input	1	Average	-	-	[6.1]	Add ASSIGNMENT CONFERENCE VENUE DETAILS	Input	1	High	-	-
[6.2]	Modify ASSIGNMENT LOCATION DETAILS	Input	1	Average	-	-	[6.2]	Modify ASSIGNMENT CONFERENCE VENUE DETAILS	Input	1	Average	-	-
[6.3]	Delete ASSIGNMENT LOCATION DETAILS	Input	1	Average	-	-	[6.3]	Delete ASSIGNMENT CONFERENCE VENUE DETAILS	Input	1	Average	-	-
[6.4]	View ASSIGNMENT LOCATION DETAILS	Inquiry	1	Low	-	-	[6.4]	View ASSIGNMENT CONFERENCE VENUE DETAILS	Inquiry	1	Low	-	-
[6.5]	Browse ASSIGNMENT LOCATION DETAILS	Inquiry	1	Low	-	-	[6.5]	Browse ASSIGNMENT CONFERENCE VENUE DETAILS	Inquiry	1	Low	-	-
[6.6]	Report ASSIGNMENT LOCATION DETAILS	Output	1	High	-	-	[6.6]	Report ASSIGNMENT CONFERENCE VENUE DETAILS	Output	1	High	-	-
[7.1]	Add ASSIGNMENT CONFERENCE VENUE DETAILS	Input	1	Average	-	-	[6.7]	Create Extract file ASSIGNMENT CONFERENCE VENUE DETAILS	Output	1			
[7.2]	Modify ASSIGNMENT CONFERENCE VENUE DETAILS	Input	1	Average	-	-	Total Number Processes / Data Groups: 7						
[7.3]	Delete ASSIGNMENT CONFERENCE VENUE DETAILS	Input	1	Average	-	-							
[7.4]	View ASSIGNMENT CONFERENCE VENUE DETAILS	Inquiry	1	Low	-	-							
[7.5]	Browse ASSIGNMENT CONFERENCE VENUE DETAILS	Inquiry	1	Low	-	-							
[7.6]	Report ASSIGNMENT CONFERENCE VENUE DETAILS	Output	1	High	-	-	Total Number Processes / Data Groups: 2						
Total Number Processes / Data Groups: 12							Total Number Processes / Data Groups: 9						
[1]	Logical Files Counted (all these details can be imported from the SCC						[1]	Logical Files Counted (all these details can be imported from the SCC					
[1.10]	ASSIGNMENT LOCATION DETAILS Internal File (ILF)	1	Low	-	-	-	[1.10]	ASSIGNMENT LOCATION DETAILS Internal File (ILF)	1	Low	-	-	-
[1.11]	ASSIGNMENT CONFERENCE VENUE DETAILS Internal File (ILF)	1	Low	-	-	-	[1.11]	ASSIGNMENT CONFERENCE VENUE DETAILS Internal File (ILF)	1	Low	-	-	-
Total Number Processes / Data Groups: 2							Total Number Processes / Data Groups: 2						
Total Processes +Data groups: 14							Total Processes +Data groups: 9						
Overall: 7							Overall: 7						



3 Interfaces with SEER SEM®

SCOPE 4.1 enables the export of Project or Release function point size and their environment data to a SEER SEM® formatted 'project' file. When the file is opened in SEER SEM® Project Estimation software, the project size and environment data is pre-loaded ready for estimating.

4 Quick Linking of Projects and Applications Impacted.

The Applications List in SCOPE 4.1 graphically displays the relationship of Projects to Applications, Releases, and Count Sessions so you can highlight (filter /flag) all Count Sessions linked to a project and quickly edit relationships.

5 Detailed FP Count Reporting Across Multiple Projects and Releases

SCOPE 4.1 has two new reports that aggregate all the FP Counting Details at Process and Data Group level for one or many:

- **Projects** across one or many applications – listing all processes and data groups impacted by each project in the selection, grouped and totalled by Application, Count Session, Project and Project set. (see report *Project – Functional Size Totals*)
- **Releases** across one or many applications – listing all processes and data groups impacted by each Release in the selection, grouped and totalled by Application, Count Session, Release and Release set. (see report *Release – Functional Size Totals*)

Now you can report all your Project Count and Release Count information in single itemised report.

Function Point Count Detail Report
Project - Functional Size Totals

Processes and Data Groups

Name	Type	Impact	DET's	FTR's	Compl	UFPs	X	Total
							Factor	UFPs
<small>(W) (R) (C) (S) (P) (Q) (G) (E) (M)</small>								
Audit Functions June 2010								
TRS (CFPS Exam Case Study Answers)								
TRS Enh Rel 2.0 Feb 2010								
TRS Audit Functions - #CR101								
Processes								
Add Audit Log Comments History	Inquiry	A	-	-	Average	4	1	4
Modify Audit Log Comments History	Inquiry	A	-	-	Average	4	1	4
Delete Audit Log Comments History	Inquiry	A	-	-	Average	4	1	4
View Audit Log Comments History	Inquiry	A	-	-	Low	3	1	3
Bitwise Audit Log Comments History	Inquiry	A	-	-	Low	3	1	3
Report Audit Log Comments History	Output	A	-	-	High	7	1	7
							(6)	25
Data Groups								
Audit Log Comments History	Internal File (LFP)	A	-	-	Low	7	1	7
							(1)	7
TOTAL (Count Session Size (UFPs))							(7)	32
TRS Enh Rel 2.0 Feb 2010 - Functional Size Totals								
AMS - View Example Counts								
AMS Enh Rel 3.0 Mar 2010								
AMS #010 Audit Functions								
Processes								
View Audit Logs	Inquiry	A	2	0	Low	3	1	3
Summarize Audit Logs	Output	A	2	0	Low	4	1	4
							Total Metrics	

Reporting the Project impact at Process level for two Applications and two Releases (TRS, AMS). The Report totals the fp impact for each application count and overall project.

6 Hyperlinks to URLs or External Documents

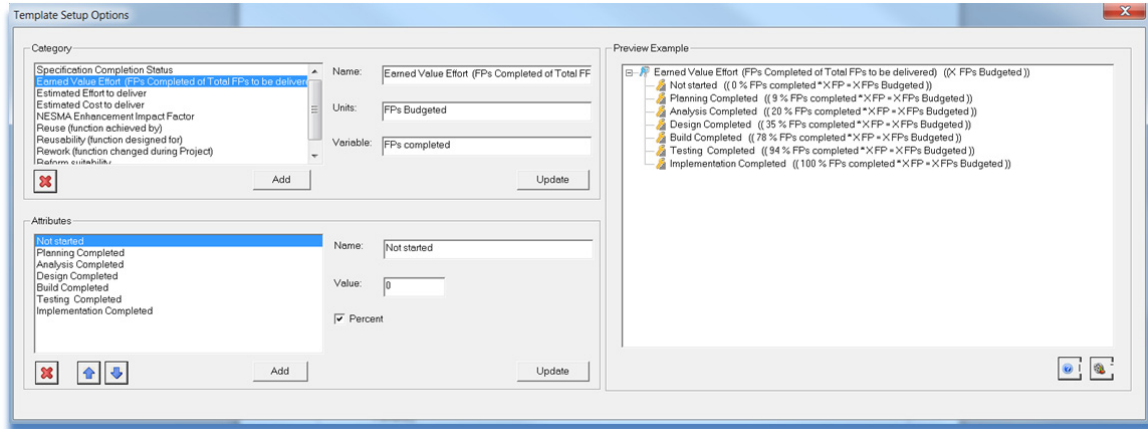
SCOPE 4.1 - Details screens - allows you to link any tree node or software entity (Application, Release, Project, and Count Session) to either a URL or file directory path. This is particularly useful for documenting your counts by cross-referencing source documents.

7 Quick Estimates of FP Size

SCOPE 4.1 links into Total Metrics FP Outline™ quick FP Sizing Estimates tool for estimating the size of your applications, development or Enhancement Projects

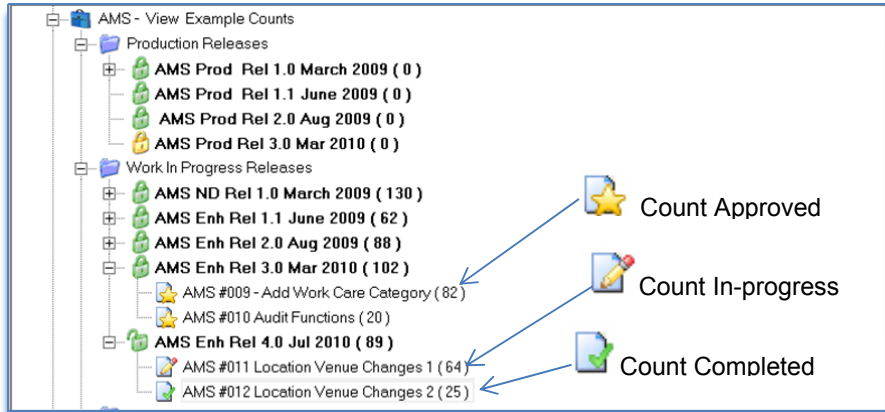
8 Customisable Templates for Numerical Attributes

The previous 4.0 release of **SCOPE** introduced the Numerical Attributes feature which enabled function point counts to be profiled for Productivity Analysis, Estimating, NESMA Impact factors, Earned Value reporting etc. **SCOPE 4.1** goes a step further by allowing you to update and add to the inbuilt Template set so you can re-use your customised Numerical Attribute values in all your counts. (See *Options <Numerical Template Attribute Options>*)



9 Icons to Track the Progress of your Function Point Counts

SCOPE 4.1 enables you to assign a 'status' to your Function Point counts to visually track their progress in the Applications List. Status can be recorded as 'Not Started', 'In Progress', 'On Hold', 'Completed', 'Approved'.



10 User Interface Updates and New User Friendly Features

- Over 20 new Shortcuts for all high use data entry fields e.g.
 - **CTRL+↑+O** sets all child Processes to be External Outputs.
 - **CTRL+↑+L** sets complexity of all child Processes to be Low (Refer *SCOPE Help - Key Board Shortcuts for all new 4.1 Shortcuts.*)
- Excel Reports have been all reformatted to enable easy analysis , audit and export
- Icons listed on all major menu items
- All List Reports now sequence on Hierarchy Position and include Hierarchy ID and Totals
- Users can now customise and re-use their Excel Benchmark Reports Templates